

# “Don’t neglect maintainers: Don’t waste investments for WASH in Schools”

---

Technical Designs

**BORDA** 

# Experiences from Afghanistan, Cambodia & S. Africa

---

## Common features of infrastructures:

- Child friendly / easy O&M / gender / free flow of light & air /high quality – long-lasting infrastructure / health & environment

## Technical options include:

- Toilets & urinals /hand washing / water supply incl. rainwater collection/ bins / water purification/ on-site ww treatment
- Infrastructure adapted to framework conditions – e.g. dry, low flush, flush

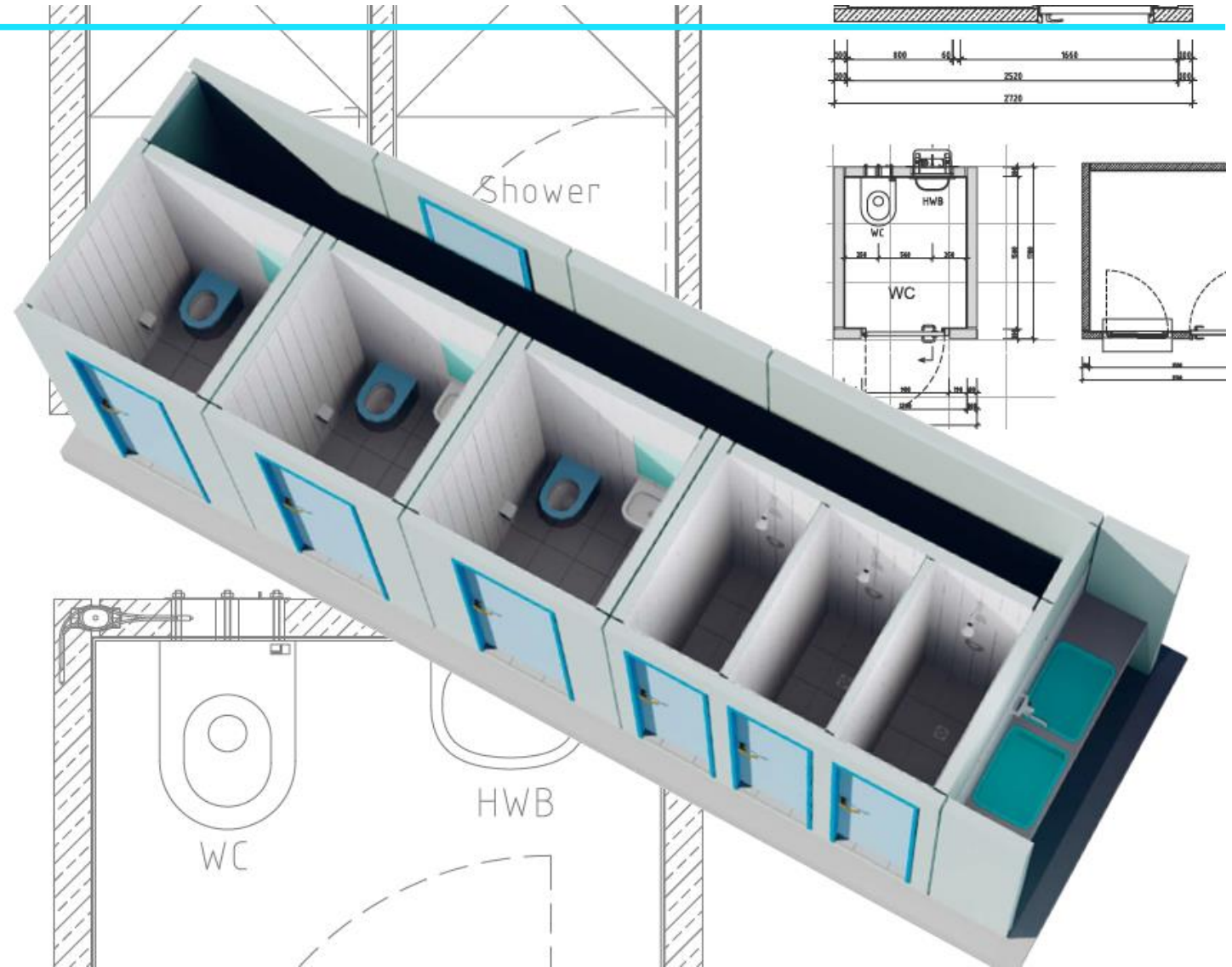
## Key to sustainable O&M

- Functioning institutional environment
- Strong committed stakeholders in planning, implementation and O&M
- High quality infrastructure construction

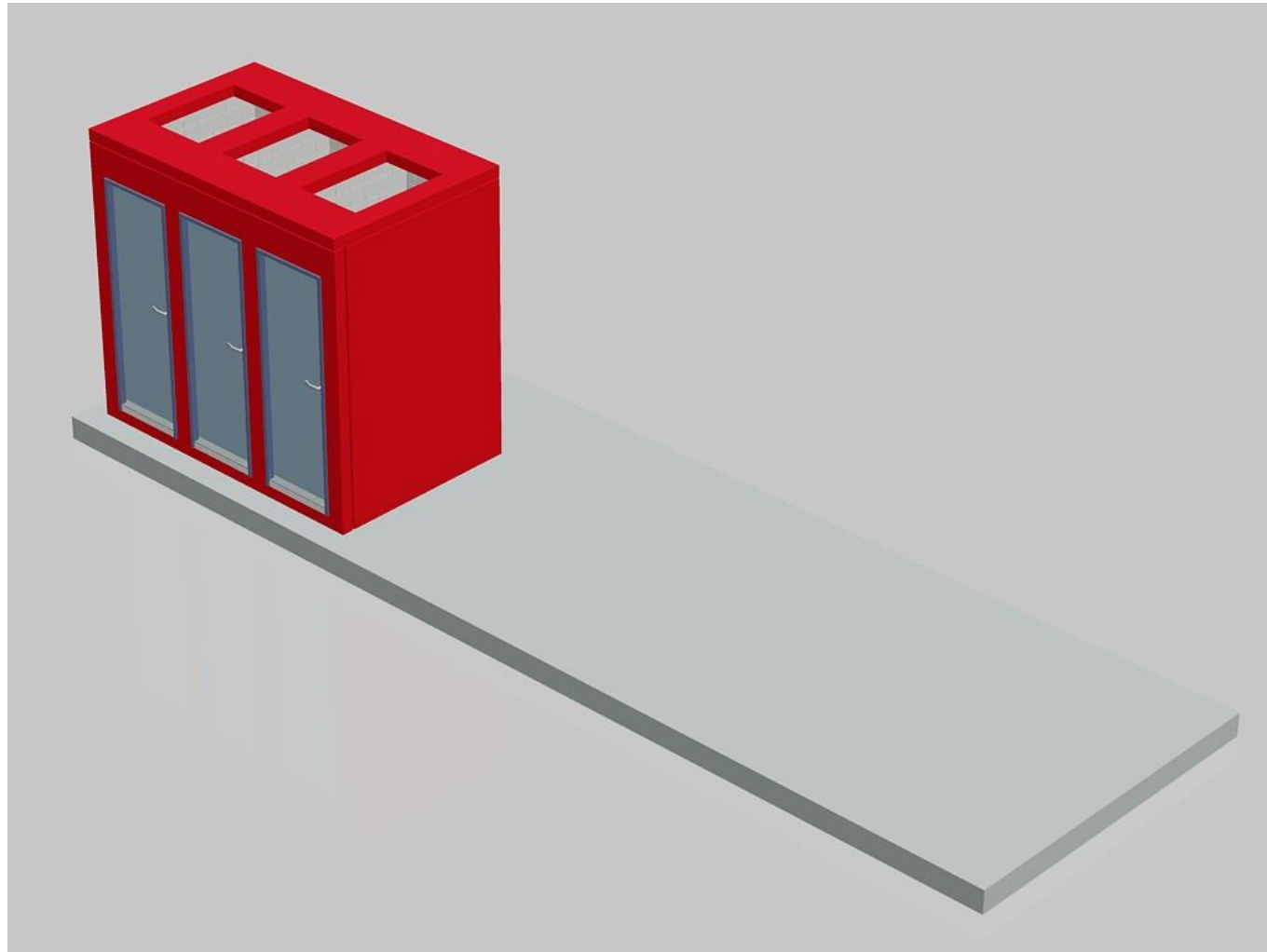
# WinS – vandalism proof designs from South Africa

## Design features

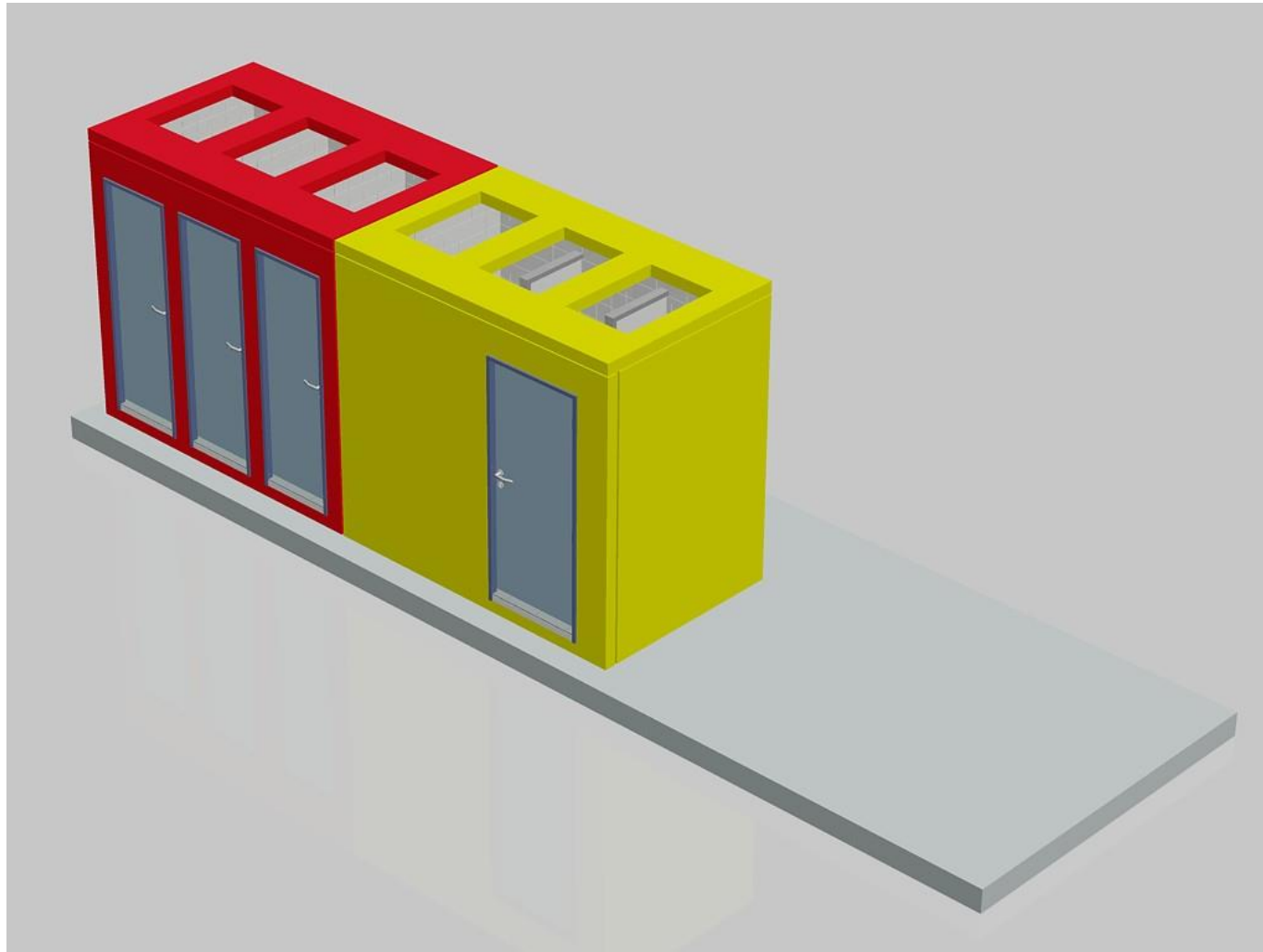
- Modular, pre-fabricated, long-lasting & appealing WinS facility
- Consider durability, sustainability, gender & environmental (DEWATS) criteria
- All supply and discharge lines are laid in a maintenance shaft in the back



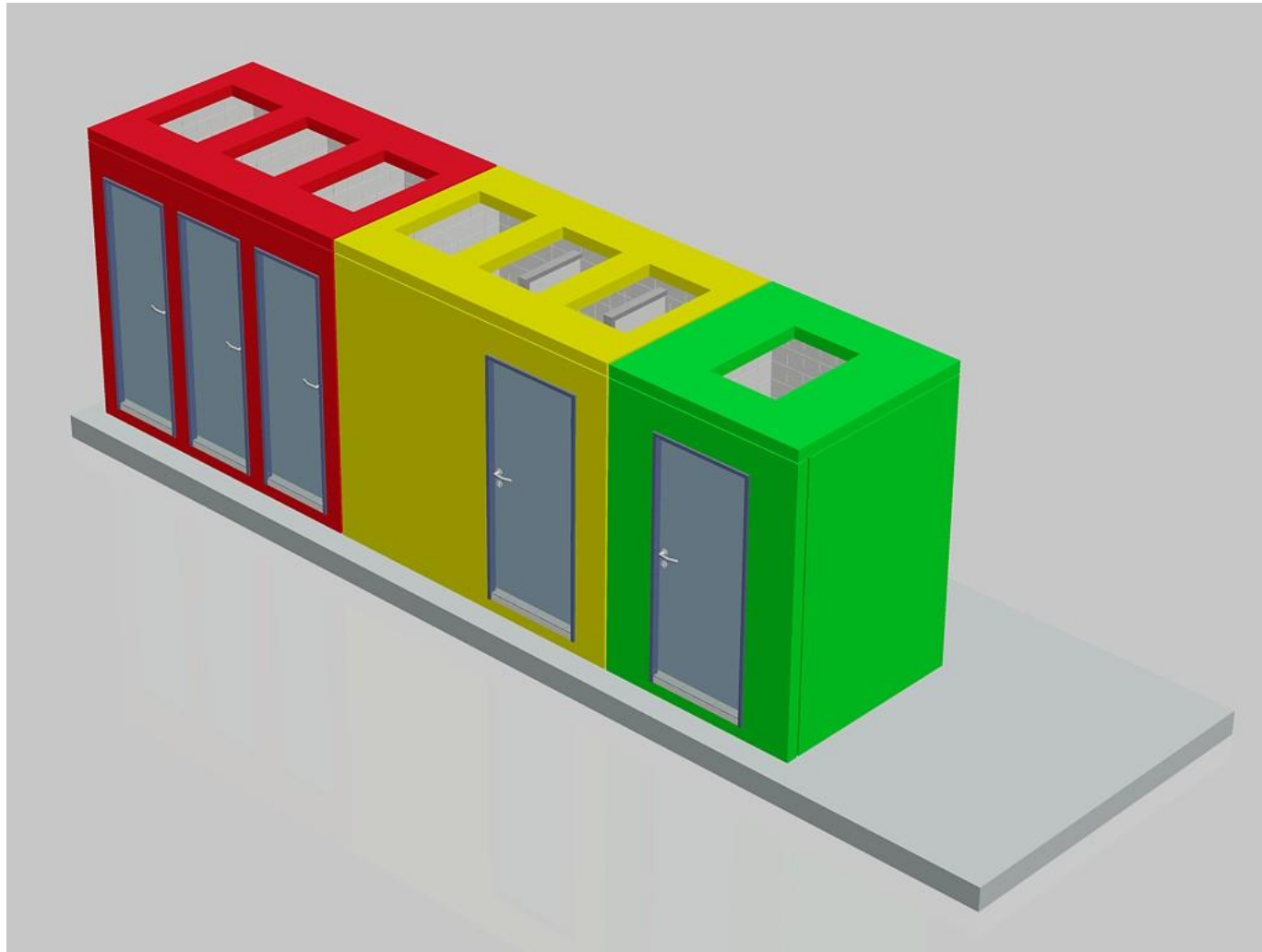
## Assembly



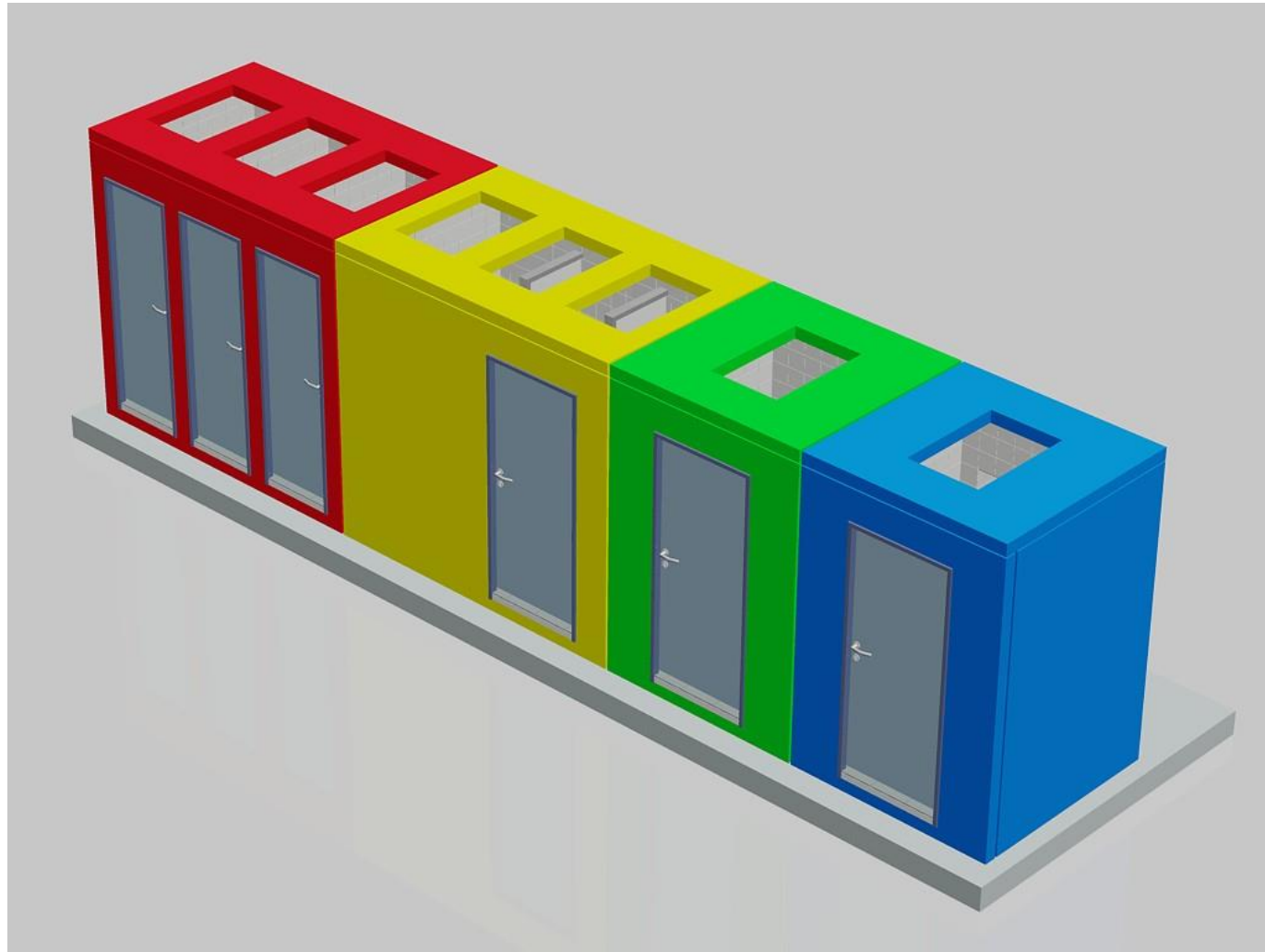
## Assembly



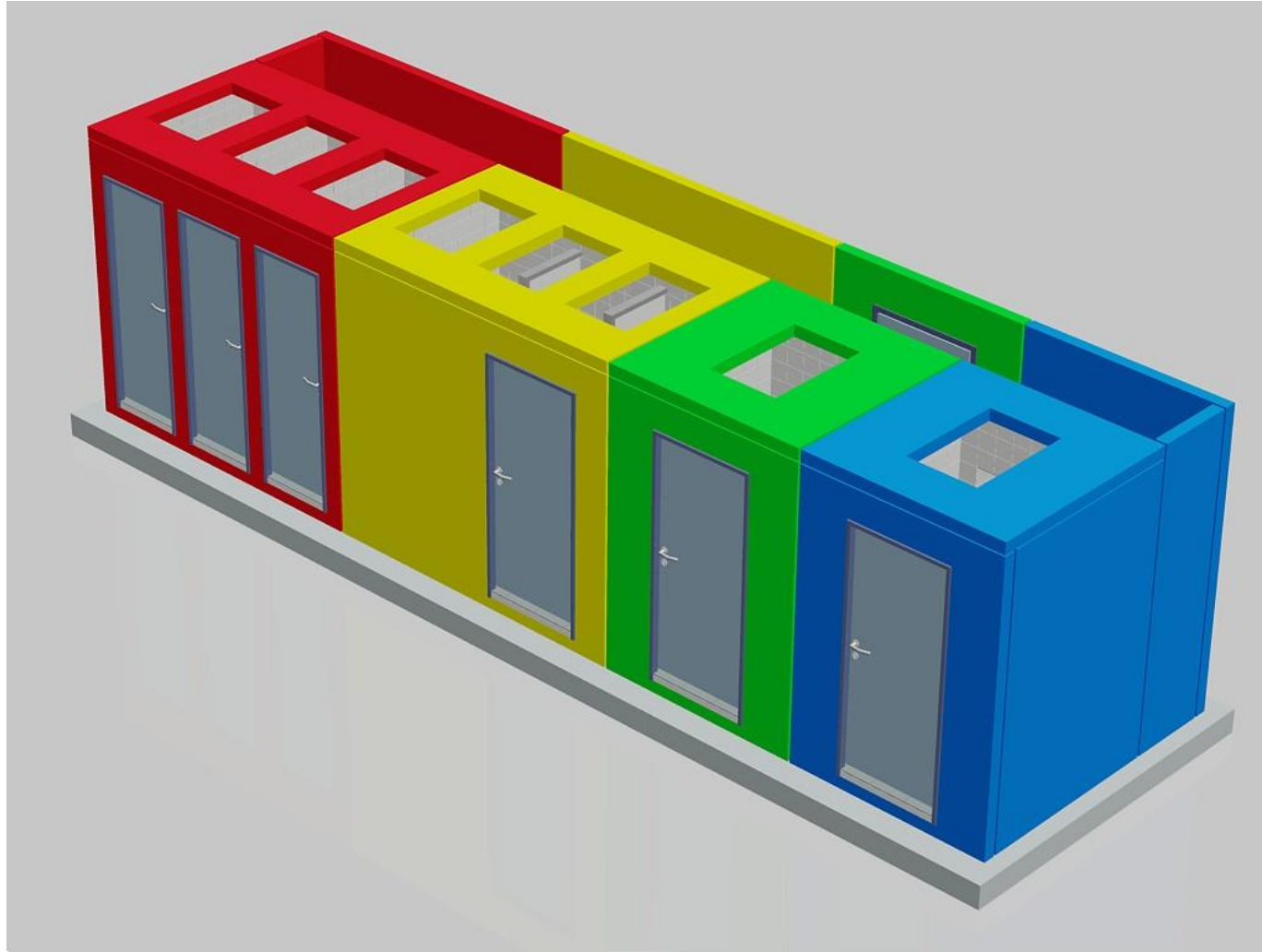
## Assembly



## Assembly

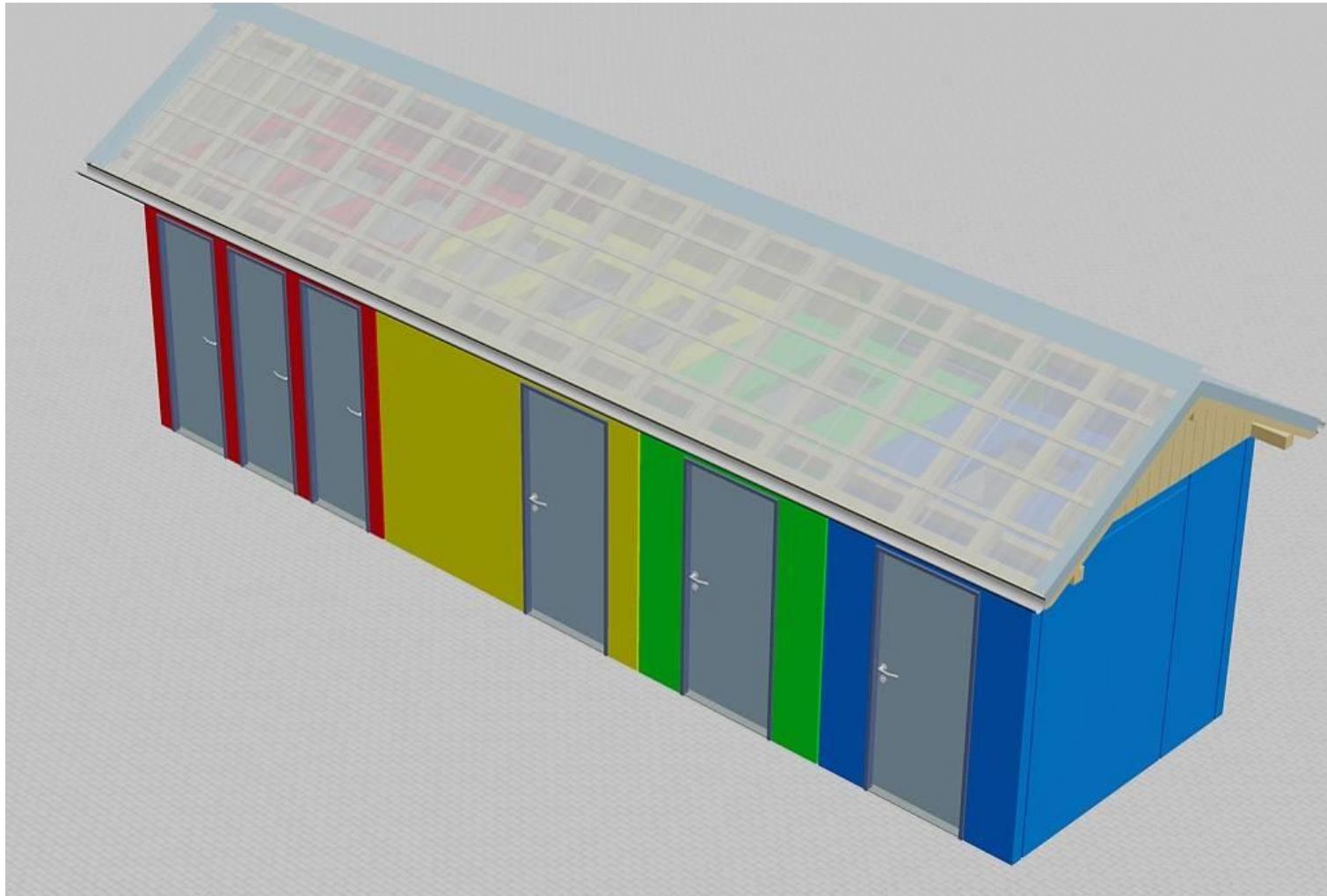


## Assembly





## Assembly



Demonstration Unit: Interior



# Operation & Maintenance beyond the user interface

---

- With the shift from MDG's to SDG's WinS needs to fulfil additional requirement.
- Focus so far on user interfaces as handwashing and toilets.
- In future wastewater treatment and reuse needs also to be in focus of WinS

⇒ Requirement for better governance and strong interagency cooperation (education, environment, water & wastewater...)

**Stefan Reuter**

Managing Director BORDA

[reuter@borda.de](mailto:reuter@borda.de)

[www.borda.de](http://www.borda.de)

